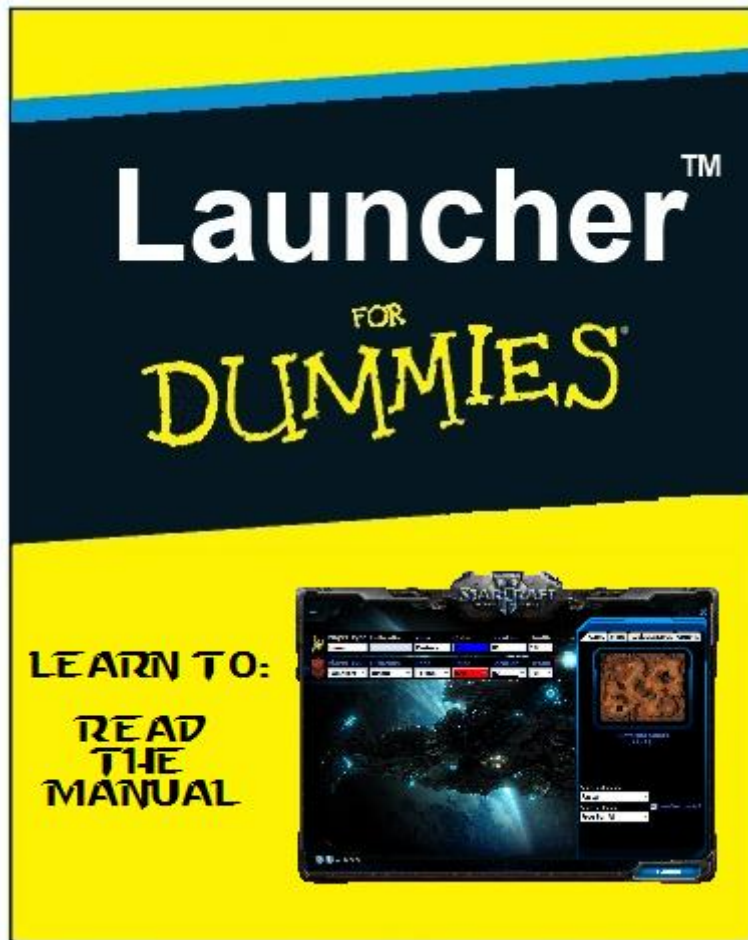


SC2Allin1 Launcher (copyright Vernam7)



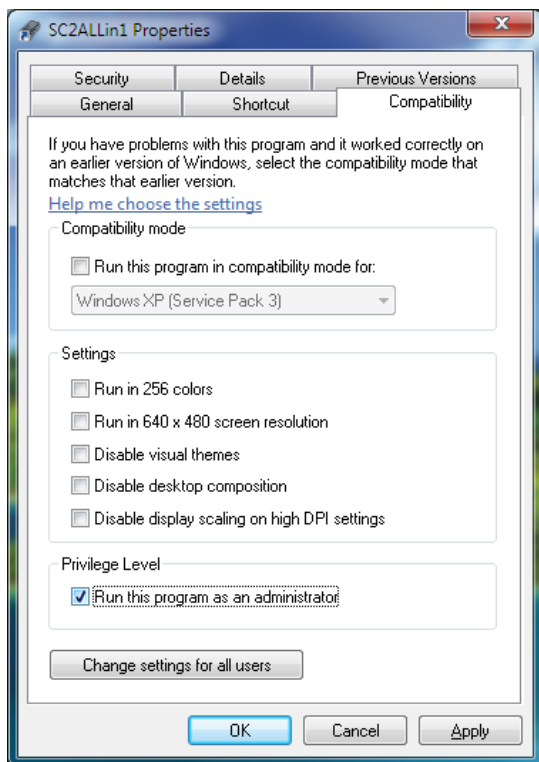
Introduction

Vernam7's launcher lets you play your retail bought StarCraft II game - single player custom maps versus the built-in Blizzard AI or the custom G.T. AI (Green Tea AI), with all the options you need at start of the game.

Installation Procedure

(Minimum requirements)

- a. Windows XP sp3, or Windows 7 sp1 recommended(32bit/64bit) with full Administrator rights
- b. .Net Framework 3.5 sp1 fully installed
- c. StarCraft 2 properly Authenticated or "cracked".(latest version if possible)
- d. Official Maps from our download page in your \Documents\Starcraft II\Maps folder.
- e. Verdana Font installed
- f. Possible antivirus disabled or with exceptions to the launcher directory.
- g. Always run the application as Administrator (if you are not already doing so)



(STEPS)

1. Install as "administrator".
2. Turn off your anti-virus during the install.
3. Program problems might be resolved by a clean reinstall of the launcher, and or the retail StarCraft II game.

Updating the launcher

Delete the folder that contains the launcher, eg C:\Program Files (x86)\StarCraft II\SC2Allin1, and then install the new version.

StarCraft II Maps

Blizzard Maps

<http://sc2.nibbits.com/assets/starcrack-allin1/>

http://www.filesonic.com/file/586789071/OfficialMaps_04_04_2011.rar

Nibbits Community Maps

<http://sc2.nibbits.com/maps/>

Charlemagne Maps Gallery

[Starcraft II Charlemagne Gallery Map Art Studio](#)

<http://charlemagne.prophpbb.com/>

ESSENTIAL: You NEED vernam7's latest version launcher in order to play custom maps against the AI.

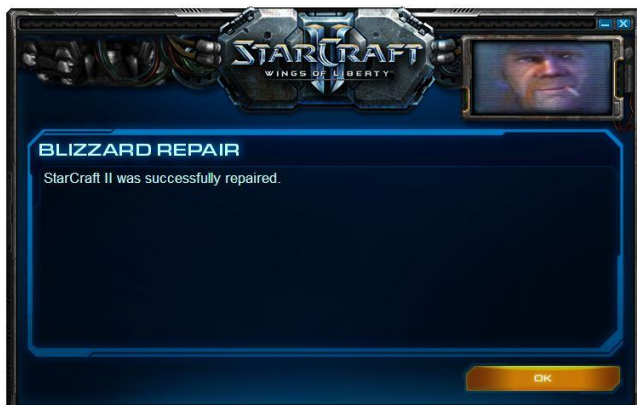
LAN

Blizzard made the decision not to implement LAN into StarCraft II. If you wish to have LAN included with StarCraft II, please contact Blizzard.

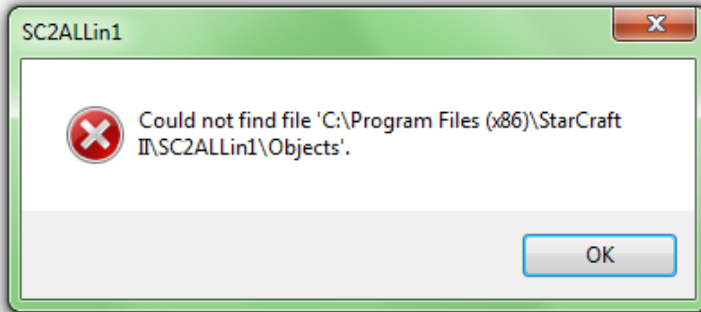
StarCraft 2 installation repair tool

Checks and repairs your installation:

C:\Program Files (x86)\StarCraft II\Support\Repair.exe

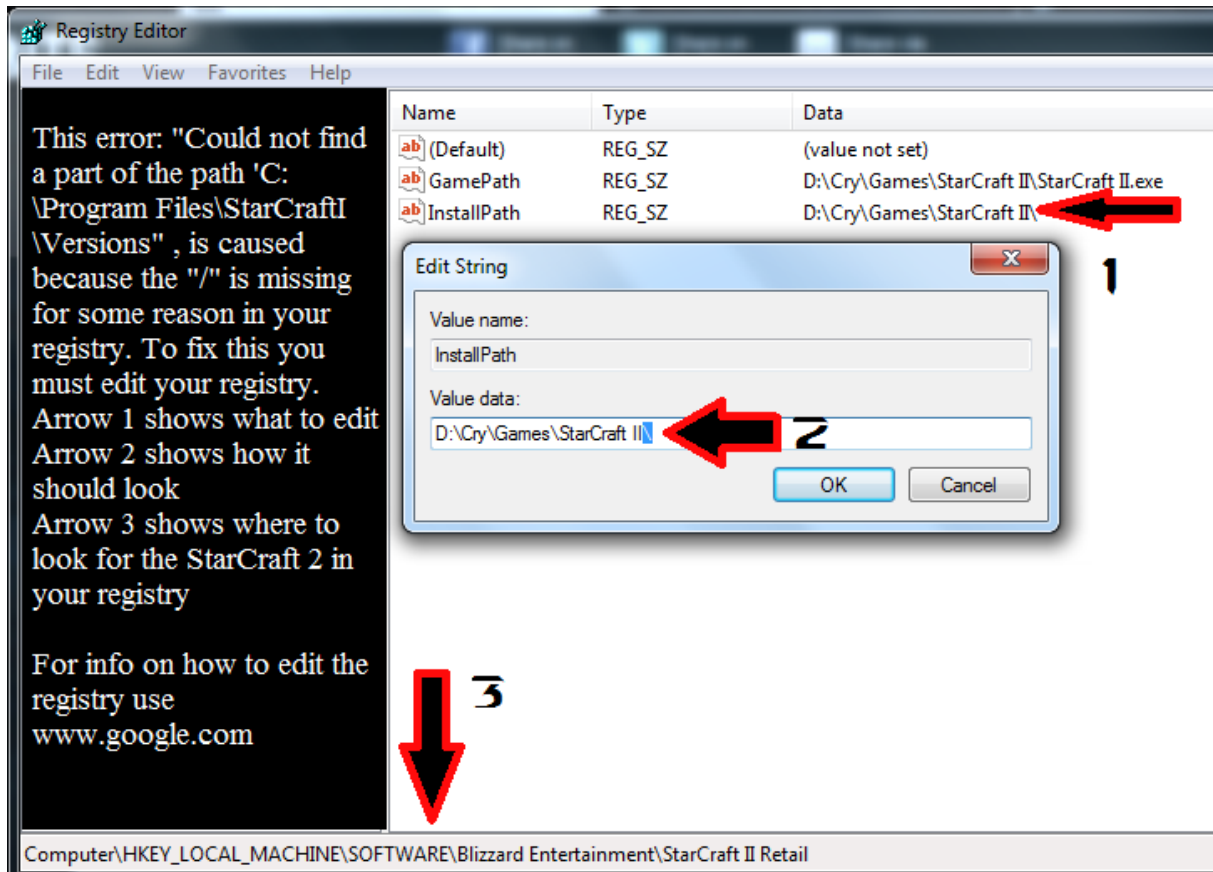


Troubleshooting



One or more maps lacks a resource (object) placement such as a mineral or vespene geyser. Simply add either and the problem is resolved.

Locate the problem map(s) here:
C:\Users\username\Documents\StarCraft II\Maps



This error: "Could not find a part of the path 'C:\Program Files\StarCraftI\Versions"', is caused because the "/" is missing for some reason in your registry. To fix this you must edit your registry. Arrow 1 shows what to edit Arrow 2 shows how it should look Arrow 3 shows where to look for the StarCraft 2 in your registry

For info on how to edit the registry use www.google.com

Name	Type	Data
(Default)	REG_SZ	(value not set)
GamePath	REG_SZ	D:\Cry\Games\StarCraft II\StarCraft II.exe
InstallPath	REG_SZ	D:\Cry\Games\StarCraft II\

Computer\HKEY_LOCAL_MACHINE\SOFTWARE\Blizzard Entertainment\StarCraft II Retail

FAQ(Frequently Asked Questions)

Q: I got the following error when starting the game: Unable to validate StarCraft 2 license.

A: You need to have either bought the game and logged in or have it cracked properly. If you have not bought it this is all I can do to help you: <http://sc2.nibbits.com/forums/43/view/1420/starcraft-ii-licence-generator-works-with-all-versions>

Q: Help?! Crack not working?! Launcher not working with the cracked game?!

A: No support for cracking or making the crack work period.

Q: I am getting this error: Object reference not set to an instance of an object.

A: Delete all your StarCraft 2 maps and use only the ones provided on our main page and in the Dummies guide. Also if this did not work right click the sc2allin1 folder go to properties than choose the security tab and make sure your current user/group of users have acces to read and write and also you can try turning off your anti-virus.

Q: I am getting this error: Could not find a part of the path C:\Program Files\StarCraftI\Versions.

A: Check the Troubleshooting photo above

Q: I am getting this error: Could not find GameStrings.txt

A: Delete all your StarCraft 2 maps and use only the ones provided on our main page and in the Dummies guide.

Q: I am getting a blank map, no units, no bases, no nothing.What is wrong?

A: You are trying to use a custom AI which you have not properly installed. To fix this make sure the "Use custom AI" box on the main window of the launcher is unchecked. This will allow you to play with Blizzard AI untill you fix your custom AI installation path. If this is not the case try a different map and only maps from our main download page and the dummies guide.

Q: I am getting this error: Conversion from string"" to type 'Integer' is not valid.

A: Delete all your StarCraft 2 maps and use only the ones provided on our main page and in the Dummies guide.

Q: Is this launcher compatible with the retail version of StarCraft II?

A: Older versions than v10.3.3 are not compatible with the retail version of the game! v10.3.3 or later are compatible!

Q: Do i need new retail maps to play with the launcher v10.3.3 or later?

A: Yes! Those maps are available for download from the tool's download page or can be auto installed from the launcher button called "Add Maps from Server", located in the Maps Tab.

Q: I am missing some of the map elements, what should I do?

A: Your maps are probably outdated or corupt. Use the latest game maps which can be downloaded from the launchers main page or you can find download links in the Dummies guide.

Q: Is this launcher legit?

A: Somewhat, yes, it is. You can use it without worrying Blizzard will ban you or anything.

Q: When I run the launcher the User Interface seems "off place" (borders, buttons, etc.) what is wrong? (e.g. ["Off place" UI](#))

A: You have set your Windows Font DPI settings over or under 100%. The launcher works only with fonts set at 100% DPI! Use google for information on how to change your DPI.

Q: Can I play the game with this launcher without an internet connection?

A: If the game starts without an internet connection. Yes, you can. (Blizzard's offline mode has some problems)

Q: Can I play custom maps?

A: Yes you can as long as they don't have triggers (besides the default) and are made like the blizzard maps. So if you want to make your own map to launch it with this launcher, first load in the editor an official map and study it. For any other maps you want to try out load it in the map editor and press the "Test Document" button.

Q: I get an error message "file not found" every time I try to launch a game why?

A: Your Antivirus / Firewall / UAC / or Windows Rights are preventing the tool for running correctly and create the files needed! Even worse those file may be deleted automatically or blocked by your AV software! Turn them all OFF and reinstall the launcher and run it as Administrator!

Q: I am pressing the Launch button but nothing happens! No error, nothing, the game just doesn't start up! Why?

A: It is possible the game is "stuck" running in your memory. Press ctrl+alt+del to open Task-Manager locate "sc2.exe" process, and END TASK it, or just restart your computer.

Q: I downloaded some map files but i don't know where to place them.

A: Simply use from the Launcher's Map Tab, the button "Add maps from folder"

Q: I am getting this error: The application failed to initialize properly (0xc0000135).

A: You need to instal [.NET 3.5 SP1](#)

Q: How can I add a custom AI?

A: The only custom AI available is the G.T. AI (Green tea AI) which can be found here along with "How to use videos": <http://sc2.nibbits.com/assets/green-tea-ai/>

Q: I am getting this error: Cant load your settings! You may have deleted my default directories! Delete the settings file and retry, or reinstall the application!

A: Just do what the error says and don't forget to launch the instal as administrator and the launcher after it is installed as administrator also.

Q: I am getting this error: Acces to path '(path here eg : program files\StarCraftII\SC2Allin1\map.SC2Map)' is denied

A: Turn off the antivirus or add the sc2allin1 folder to its exception list and make sure you are starting the launcher as administrator.

Extra Notes

1. For more troubleshooting issues: <http://sc2.nibbits.com/forums/29/allin1-tool>
2. And don't forget to read the FAQ and follow the installation guide before posting anything on the forums.

Credits

Created by: **VERNAM7**

Special thanks to:

StarCrack Team

D/G Tea Team

Charlemagne

Prometheus

Artanis186

Sindrome

terran58

Reloded

Phoenix

et2010

Syryuu

ahydra

Cry17

Ladik

Enox

gzx

Blizzard Entertainment
and **YOU** for supporting this tool!